

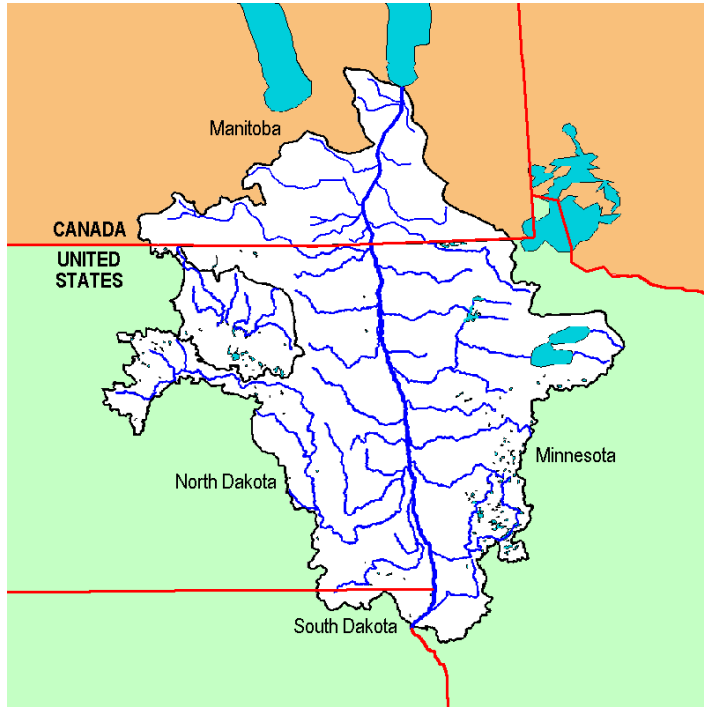


RED RIVER BASIN DECISION INFORMATION NETWORK (RRBDIN) PROJECT PLANNING AND PERMIT EVALUATION TOOL

The Red River of the North basin (RRB) covers 45,000 square miles and occupies portions of North Dakota, Minnesota, Manitoba and South Dakota. Frequent severe flooding and loss of native habitat are major issues of concern in the RRB.

The U.S. Army Corps of Engineers (USACE), the Red River Watershed Management Board and the North Dakota Red River Joint Water Resources Board signed a federal watershed feasibility study cost share agreement on June 4, 2008. The study goal is to develop a basin-wide watershed management plan that incorporates improved water quality, ecosystem restoration, flood damage reduction and water supply. The agreement identified a number of phases including the collection of basin-wide Light Detection and Ranging (LiDAR) data (Phase 1), refining hydrologic and hydraulic for project planning and flood forecasting (Phase 2), and developing a decision support system (Phase 3). The information from the first three phases will be used to develop a watershed management plan (Phase 4).

The International Water Institute (Institute) is charged with developing the decision support system and plan to upgrade the existing the Red River Basin Decision Information Network (RRBDIN) website. The RRBDIN was developed after the 1997 Red River of the North flood by the International Joint Commission and the USACE (www.rrbdin.org). The RRBDIN was envisioned as



The Red River of the North is an international watershed.

an online decision support system that would facilitate information exchange and better inform and prepare residents of the RRB.

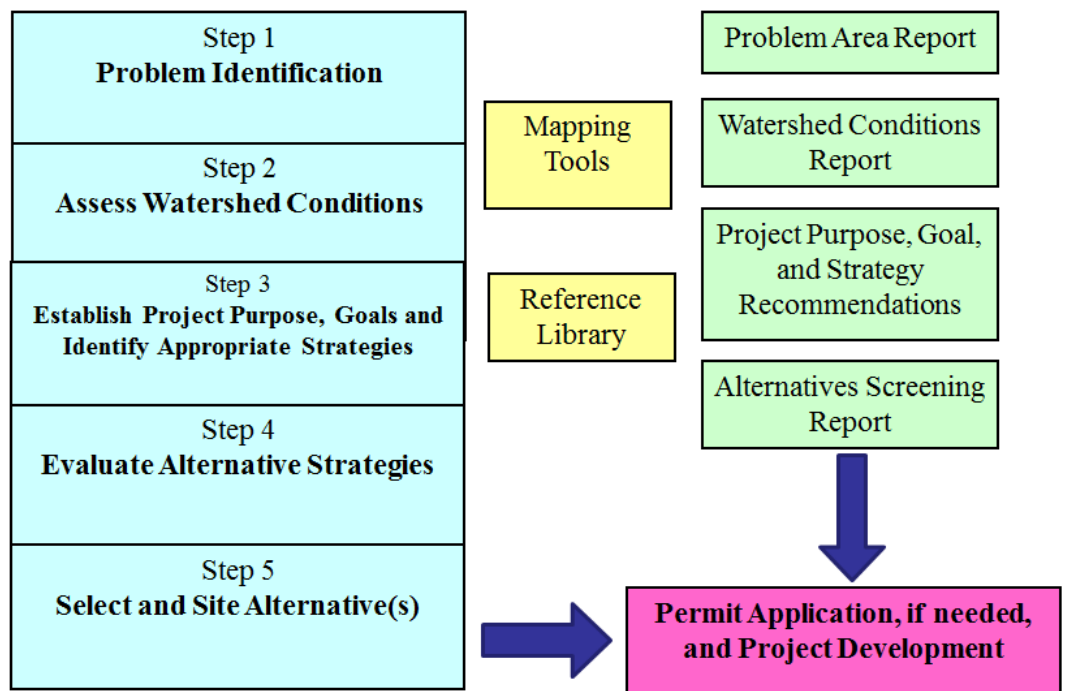
The Institute plans to update the RRBDIN website

and develop a series of online decision support tools for the public and local land and water managers. One of the decision support tools envisioned is the “project planning and permit evaluation

tool (PPPET). The PPPET is funded by the Red River Basin Commission and uses the LiDAR data to assist managers with planning and implementation of flood damage reduction projects. PPPET project outcomes include:

- Clear and consistent process for problem identification and site selection.
- Online decision support including a mapping tool, permit evaluation tool, watershed support, and new pre-processed data (LiDAR-derived projects, permit complexity).
- Standardized documentation of project planning and alternatives analysis consistent with permit requirements.
- Opportunity to develop projects with a high level of consistency and transparency for review by the public, legislators/funders, board members, local officials, etc.

Continued on Next Page



WATERSHED DISTRICT DEVELOPMENTS

MIDDLE SNAKE TAMARAC RIVERS WD

The Middle Snake Tamarac Rivers WD reported on the status of their Overall Plan Update. The District received approval of the plan update from the Board of Water and Soil Resources.

RED LAKE WD

The Red Lake WD reported on the Grand Marais Creek Cut Channel Project. Due to continued high waters on the Red River of the North, surveys which need to be conducted prior to completing the final engineer's report have been delayed. Plans are to have the survey completed yet this summer with construction to begin this fall.

WILD RICE WD

The Wild Rice WD reported on this year's flood damages. The District is compiling information on damages that occurred during this year's flood event. Norman County as a whole has incurred over \$1,000,000 in damages this year which includes all political entities in the county.

EVENTS COMING UP

The next meeting of the RRWMB will be on Tuesday, August 16, 2011 at 9:30 a.m. at the Wild Rice Watershed District, 11 5th Avenue East, Ada, MN.

The Institute is working with local managers in Moccasin Creek (Wild Rice WD) - MN and North Branch Park River (Walsh County Water Resource District) - North Dakota to ensure the tool meets the needs of local managers and addresses the necessary steps for project development.

The Institute is also working with partners to incorporate new technologies into the PPPET. The Natural Resources Conservation Service is developing a reservoir estimation feature that will enable users to electronically draw dams and levees

on the map interface. Using the LiDAR generated digital elevation model, the PPPET will determine the anticipated inundated areas and estimated storage potential of a proposed flood damage reduction project.

Future effort will focus on continuing field verification of the pilot project areas, outreach, developing the needed computer programming and eventually expanding the tool for the entire RRB.

For additional information on the Project Planning and Permit Evaluation Tool and the Next Generation RRB-DIN website, please contact

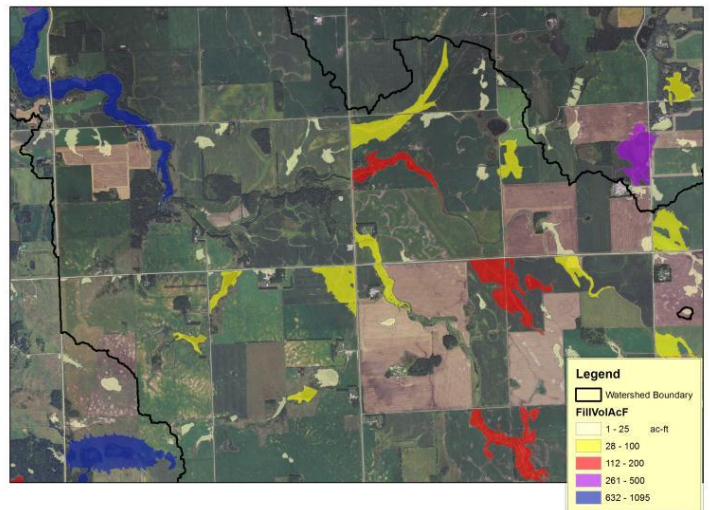
RRWMB MEETING HIGHLIGHTS

At its regularly scheduled July meeting, the RRWMB:

- Discussed the FY 2012 RRWMB tax levy rate and approved maintaining the levy at 100%.
- Received a report from Naomi Erickson, Administrator.
- Authorized sending a letter to the Buffalo-Red River WD developed by N. Erickson regarding recent discussions relative to their watershed district rejoining the board.
- Received a presentation from Henry VanOffelen, Minnesota Center for Environmental Advocacy (MCEA) regarding the Project Prioritization and Permit Evaluation Tool currently under development to be included on the Red River Basin Decision Information Network website (www.rrbdin.org).
- Received a Water Quality Project Monitoring report from Wayne Goeken, Director - Center for Watershed Education.
- Discussed the Public Information Specialist position and agreed to conduct a conference call with the Human Resources and Public Information Committees to review the applications submitted.
- Authorized the resolution and funding advance agreement for the Hendrum and Perley Levee Projects of the Wild Rice WD.

Charles Fritz, Director -
International Water Institute,

Office: (701) 231 9747, charles.fritz@nds.edu.



Existing depressional areas in Moccasin Creek watershed.

PAID
PRESORTED
STANDARD
U.S. POSTAGE

Crookston, MN
PERMIT NO. 71

Your comments and contributions are always welcome. If you are receiving this newsletter and are not currently a member of a governing unit in the Red River Basin, please notify us and provide the name of the appropriate person to be added to our mailing list. News & Views, c/o RRWMB, P.O. Box 763, Detroit Lakes, MN 56502-0763. Phone: (218) 844-6166; Fax: (218) 844-6167.

NEWS & VIEWS

c/o RRWMB
P.O. Box 763
Detroit Lakes, MN 56502-0763